



Overnight on Milford Sound

SPECTACULAR NEW ZEALAND

9 DAYS + FROM \$6,799 + Small Groups of Never More than 16 Guests or Travel Privately

Our Distinctive A+R Style

- + Wake up to some of the most stunning scenery on Earth on our naturalist-guided overnight cruise deep into Milford Sound.
- + Step aboard a turn-of-the-century steamer and cruise across Lake Wakatipu to spend time on a working sheep-station homestead.
- + Venture by 4WD into Middle Earth, the breathtaking and awe-inspiring setting for *The Lord of the Rings* films.
- + Embark on a thrilling jetboat ride through the rocky gorges of the Shotover River.
- + Savor the wine and farm-to-table dining of the South Island.
- + Discover Christchurch's English ambiance.

OUR JOURNEY

DAY 1 | **Welcome to Queenstown**

Upon arrival, you'll be escorted to the 5-star *St. Moritz Hotel*. This evening, gather for a Welcome Dinner with wine. MEALS D

DAY 2 | **Discover Middle Earth**

Our 4WD adventure to Glenorchy immerses you in the lush landscapes of the *Lord of the Rings* films. Next, a gondola ride to Bob's Peak to take in the spectacular scenery. After lunch, thrill to a jetboat ride on the picturesque Shotover River. MEALS B+L

DAY 3 | **In + around Queenstown**

Visit the Kiwi Bird Park to see unique native species, then explore Gold Rush

history in Arrowtown. This afternoon, board a turn-of-the-century steamer to cruise across beautiful Lake Wakatipu. Step off at a working high-country homestead to see highly trained sheep dogs in action and enjoy a delightful lakeside dinner with fine New Zealand wine. MEALS B+D

DAY 4 | **Cruise Milford Sound**

Skirt the shores of Lake Wakatipu and journey into spectacular Fiordland National Park to embark upon your overnight cruise. Enjoy a leisurely afternoon and dinner as you sail with our shipboard naturalist. Marvel at waterfalls, rainforests and wildlife – and maybe even explore in the ship's tender or kayaks! MEALS B+D



DAY 5 | *Te Anau to Clyde*

Step off the ship this morning and journey to Te Anau, an alpine region set on the shores of one of New Zealand's deepest lakes. Visit Te Anau Bird Sanctuary followed by lunch, then onward to the spectacular Kawarau Valley. See the famous Bungy Bridge where adventurers launched the worldwide bungy jumping craze in 1988 before checking in to *Oliver's* in historic Clyde. MEALS B+L

DAY 6 | *Explore beautiful Central Otago*

With fruit orchards and rolling fields, this is one of New Zealand's loveliest areas. Begin your day in Cromwell and sample the region's bounty at a local orchard. Enjoy a tasting and lunch at a nearby winery and visit one of the region's historic mines and pan for gold before returning to Clyde. MEALS B+L+D

Enjoy a leisurely morning, and then journey over the Canterbury Plains to Christchurch. Enjoy the English ambiance of Christchurch as you set out to see the town's architectural landmarks and the Botanic Garden. Delight in a 3-course dinner at a local restaurant and overnight at the *George Hotel*. MEALS B+D

DAY 9 | *Depart Christchurch*

Transfer to the airport for your flight. Or continue your adventure with our 4-day North Island extension. MEALS B

Begin in Australia

Our 12-day Australia Explorer fits perfectly *before* your New Zealand tour – See page 42.

End your journey on the North Island

Fly to Rotorua then travel to Auckland, with in-depth sightseeing. 4 days from \$3,699.

DAY 7 | *Scenic Lake Tekapo + Mt. Cook*

Enjoy a tour and tasting at the esteemed *Maori Point Vineyard*, then journey through the imposing Lindis Pass to reach New Zealand's highest mountain for an available Mt. Cook flightseeing tour. Check in to the *Peppers Bluewater Lake Tekapo* in time for dinner. MEALS B+D

DAY 8 | *Onward to the Garden City*

9 DAYS FROM ~~\$7,299~~ \$6,799

OUR ORIGINAL JOURNEY **Value**

- + Comprehensive sightseeing across the South Island with never more than 16 guests including all entry fees
- + 17 meals: 8 breakfasts, 3 lunches, and 6 dinners with fine New Zealand wines
- + 7 nights in our wonderful boutique hotels
- + 1 night in a private outside cabin aboard the *Milford Mariner*
- + All gratuities are included, except for your Trip Leader
- + All on-tour transportation and transfers
- + All luggage handling, hotel taxes, port charges and fees
- + 4 or more guests save \$100 each
- + Solo guests enjoy double occupancy hotel and cruise accommodations

2023-2024 Rates

LAND ONLY PER PERSON

Never More than 16 Guests

2023	DOUBLE	SOLO SUPPLEMENT
Jan 7, 25, Feb 7, 19 Mar 14, 24		
Oct 15, Nov 2	\$7,299	\$2,400
Dec 3	\$7,599	\$2,500
2024		
Jan 8, 20, Feb 1, 20 Mar 9, 21, Apr 2	\$7,299 \$7,499	\$2,500 \$2,400

Travel Privately Any Day

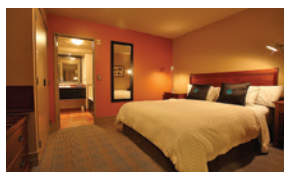
2023 + 2024	DOUBLE	SOLO SUPPLEMENT
Starting From	\$10,599	\$2,400

Save up to \$1,000 per couple | \$500 solo when you pay in full at time of booking

Go on a Custom Journey

From New Zealand to Australia, we can design a trip tailored to your personal schedule, style and interests.

Our Great Boutique Hotels + Comfortable Small Ship



QUEENSTOWN - HOTEL ST MORITZ

Our stylish boutique hotel offers stunning views of Lake Wakatipu and the mountains. Our guests also enjoy free WiFi.



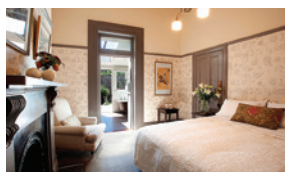
LAKE TEKAPO - PEPPERS BLUEWATER RESORT

Located on the northern shore our resort is set amongst the purest natural landscape. A+R guests enjoy lakeview suites with picturesque views.



MILFORD SOUND CRUISE - MILFORD MARINER

Rarely found on other trips, our overnight Milford Sound cruise promises more time to enjoy this natural wonder. As we take you along the full length of the Sound, our expert naturalists are on hand to illuminate your voyage. Our cruiser offers 30 outside cabins, spacious viewing decks, hearty meals, expert naturalists and free use of kayaks.



CLYDE - OLIVER'S

Set on an authentic 19th-century homestead, our intimate 11-room lodge blends modern comfort with local charm and history.



CHRISTCHURCH - THE GEORGE

At this luxury boutique hotel on the River Avon, our guests enjoy a welcome drink, free WiFi, and nightly turndown.